

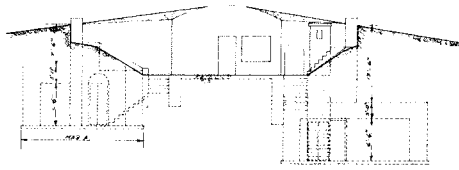
MACAULAY POINT, ESQUIMALT B.C.
 DEPARTMENT OF NATIONAL DEFENCE
 COMBINED BATTERY COMMAND POST
 AND E.L.O. POST.
 345/198-21

*Search light
 Directors
 Stations*

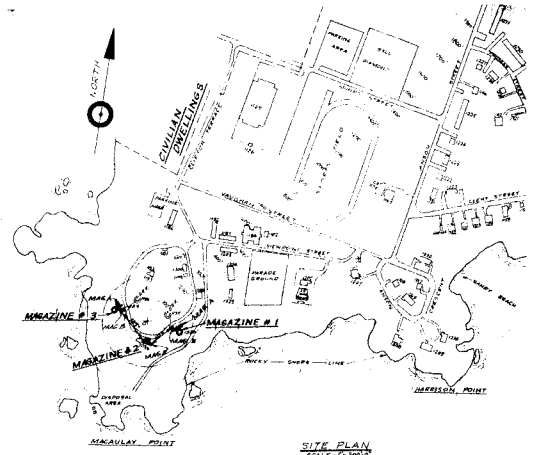
*Battery Command Post
 E.L.O. Post,
 Electric Light Obs. Post -*

/194D

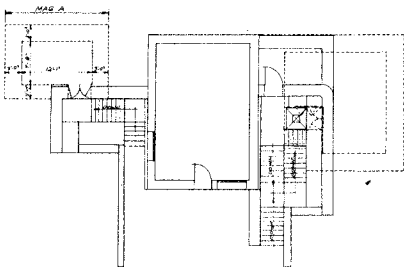
M.



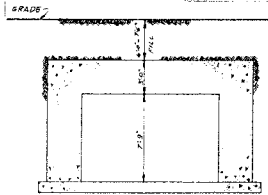
NORTH ELEVATION OF MAGAZINE #2
SCALE - 1/8" = 1'-0"



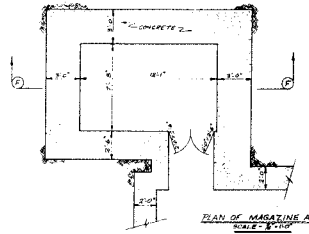
SITE PLAN
SCALE - 1/8" = 1'-0"



MAGAZINE #2
SCALE - 1/8" = 1'-0"



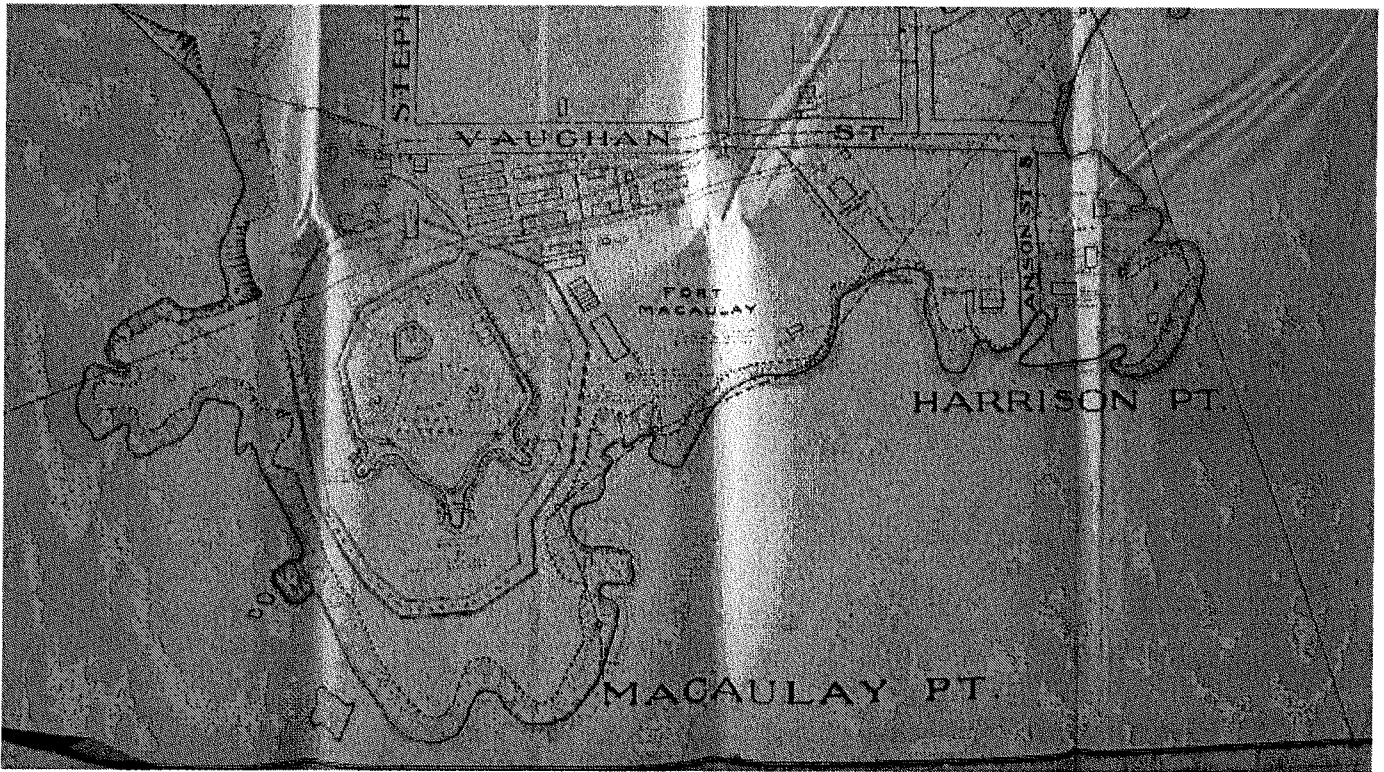
SECTION E-E
SCALE - 1/8" = 1'-0"

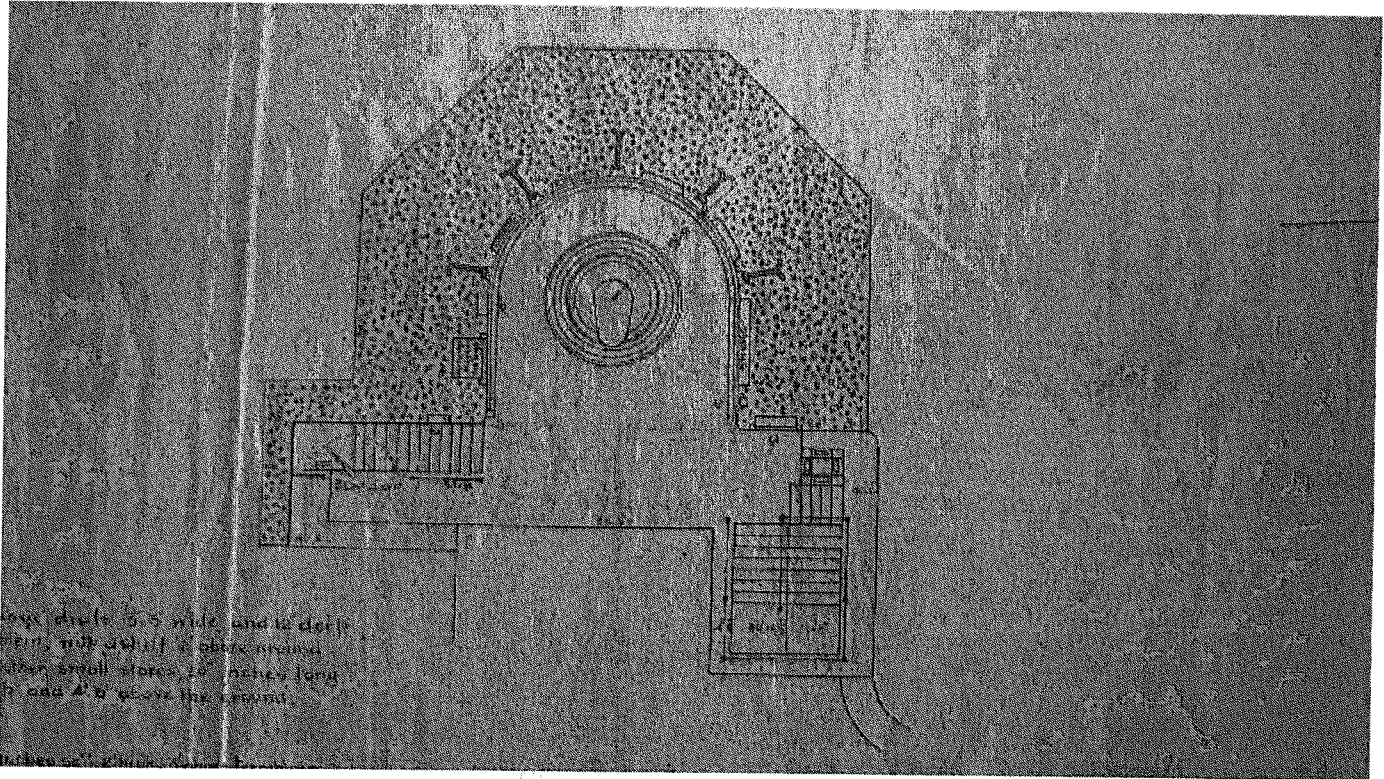


PLAN OF MAGAZINE A
SCALE - 1/8" = 1'-0"
MAGAZINE #2

| | |
|-----------------------------------|----------------------|
| DEPARTMENT OF NATIONAL DEFENCE | |
| ARMY | |
| OFFICE OF AREA ENGINEER B.C. AREA | |
| VICTORIA, B.C. | |
| WORK POINT BARRACKS VICTORIA BC | |
| BLDG 1196 | |
| MAGAZINE | |
| DATE: 11/11/64 | SCALE: 1/8" = 1'-0" |
| BY: [Signature] | CHECKED: [Signature] |
| DRAWING NO. 343-1196-21 | |

1964.



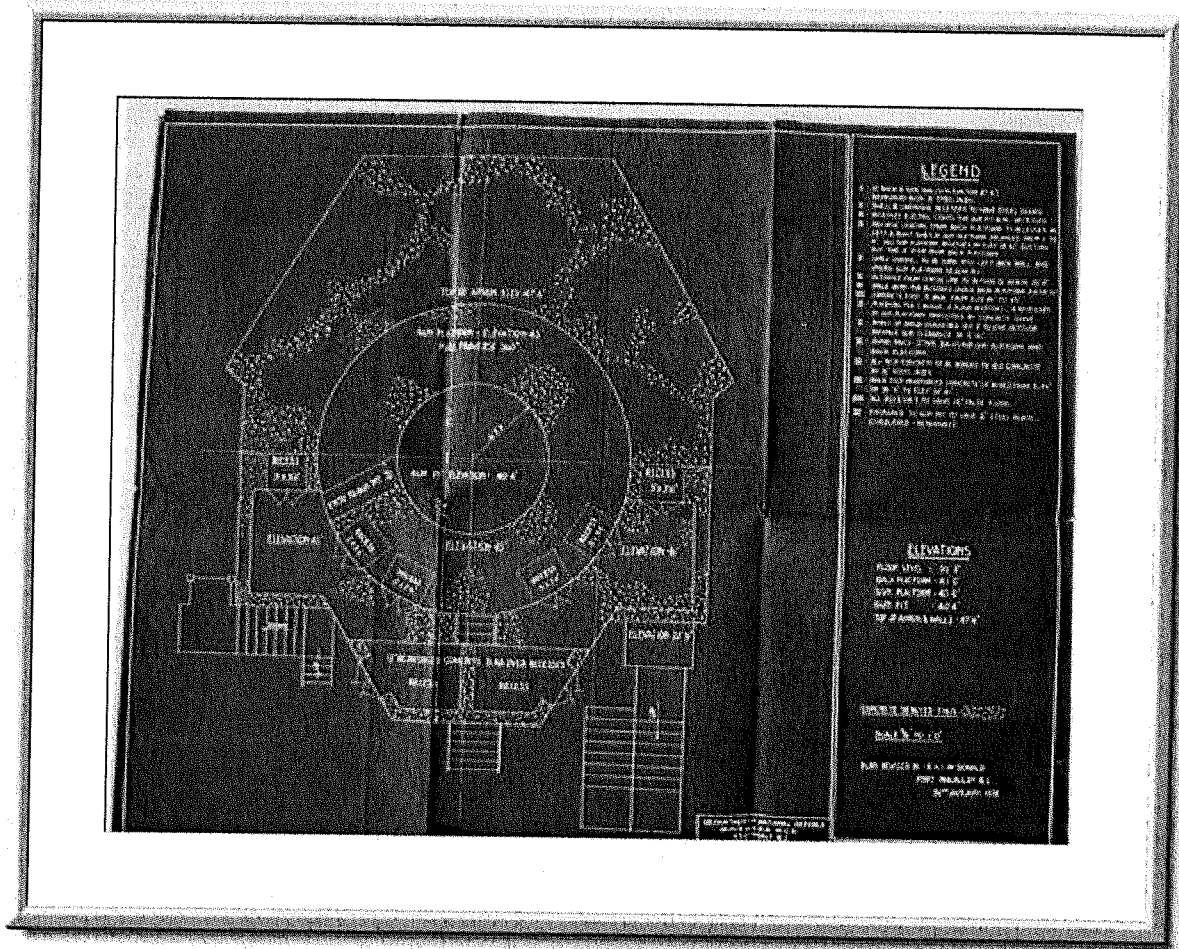


Here are the photos that I want to share with you
Jennifer Cousineau
to:

lan.Doull@pc.gc.ca
28/12/2012 11:52 AM

Sent by:
jennifer.cousineau@pc.gc.ca
Show Details

Here are the photos that I want to share with you. 1938 Gun Emplacement



I sent these photos using Adobe(R) Photoshop(R) Elements 6.0. Find out more:
<http://www.adobe.com/products/photoshopelwin/>