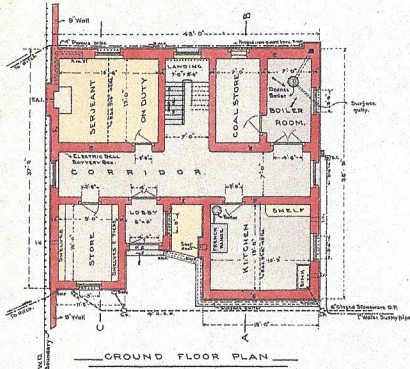
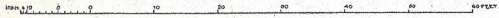
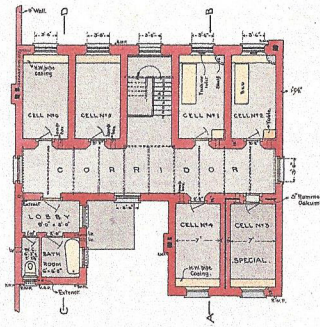


WORK POINT BARRACKS.
RECORD PLAN OF PROVOST ESTABLISHMENT.

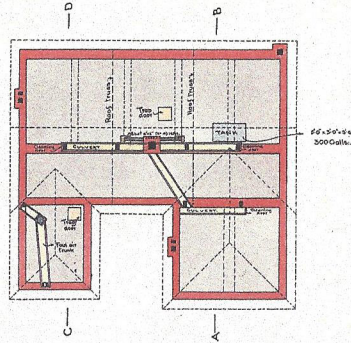
SCALE EIGHT FEET TO ONE INCH (R.F. 80).



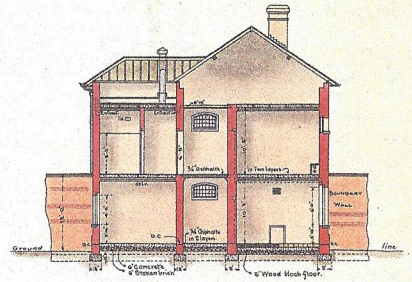
GROUND FLOOR PLAN



FIRST FLOOR PLAN.



PLAN AT CULVERT LEVEL

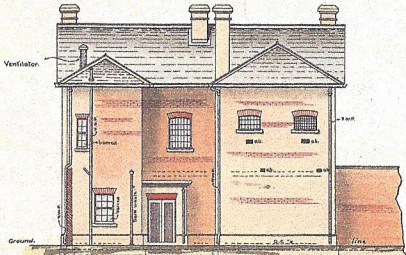


SECTION ON C.D.

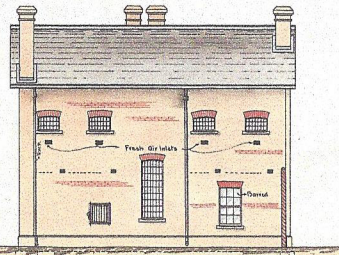
NOTE: FLOORS TO CELLS, ANNEXE, AND CORRIDORS OF 6" CEMENT CONCRETE COVERED WITH 3/4" ASPHALTE IN TWO LAYERS TO BOILER ROOM, COAL STORE, STORE AND KITCHEN OF 6" CEMENT CONCRETE, TO SERJEANT'S ROOM 6" WOOD BLOCKS ON 6" CEMENT CONCRETE.

WINDOWS TO CELLS AS BARRACK DESIGN IN 1885. CELLS HEATED BY H.W. PIPES. BUILDING LIGHTED ELECTRICALLY. COMMUNICATION FROM EACH CELL TO SERJEANT'S ROOM BY ELECTRIC BELL.

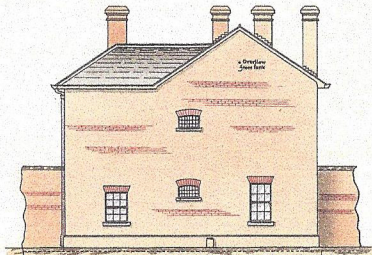
THE WHOLE BUILT OF LOCAL RED BRICK WITH SLATED ROOF ON 12" CONCRETE FOUNDATIONS.



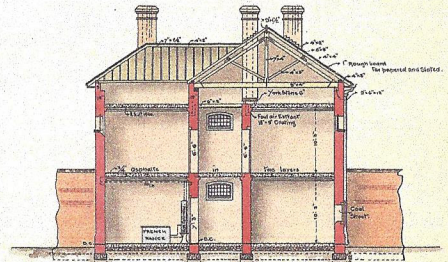
EAST ELEVATION



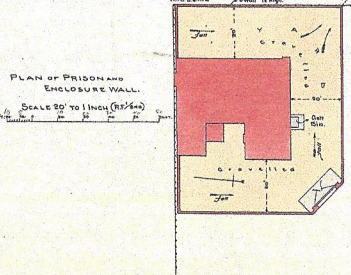
WEST ELEVATION



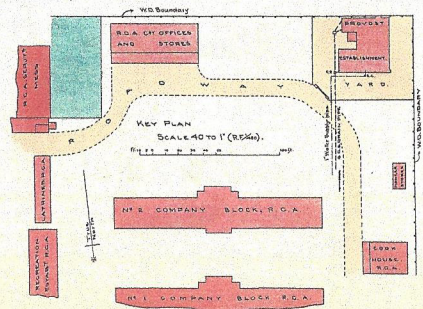
NORTH ELEVATION.



SECTION ON A.B.



PLAN OF PRISON AND ENCLOSURE WALL. SCALE 20 TO 1 INCH (R.F. 20).



KEY PLAN SCALE 40 TO 1 (R.F. 40).

DATE OF AUTHORITY TO COMMENCE. ESQ/10/10/17 DATED 15.4.05.
DATE OF COMMENCEMENT..... 20.5.05.
DATE OF COMPLETION..... 30.9.04.
ESTIMATED COST..... £ 2100.0.0.
ACTUAL COST..... £ 2250.0.0.

(Signed) H. Blundell
MAJOR, R.E.
O.C. R.E. ESQUIMALT.
27th January 1905.

DRAWN AND TRACED BY:
S. G. FRENCH, B.C. R.E.
23rd JANUARY 1905.