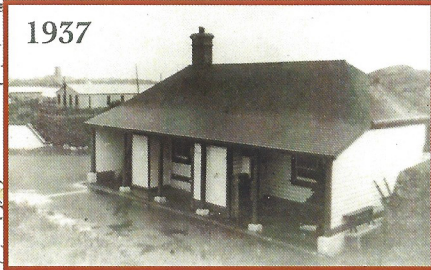


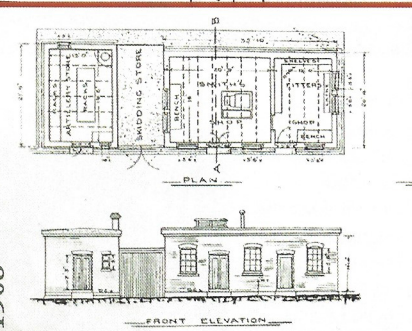
1947

30 foot Barr and Stroud range-finder located on top of the Battery Command Post.



1937

The Guard House was located by the lower entrance to the tunnel. The foundation is visible, but the building has long been removed.

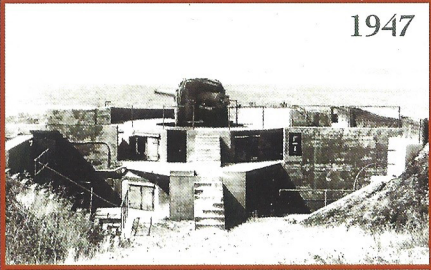


1903

1903 plans of the (still standing) Artillery Stores, Skidding Stores, Smith's Shop and Fitter's Shop. The Machine Gun Ammunition Stores building is in the background.

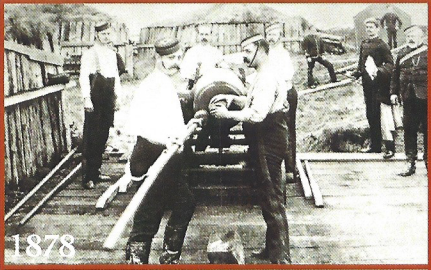


2017



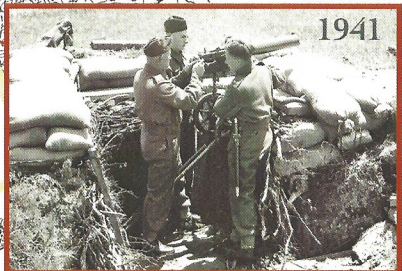
1947

Six-inch Mk VII Breech-loading gun on the right emplacement.



1878

Original 7-inch rifled muzzle loading gun locations.



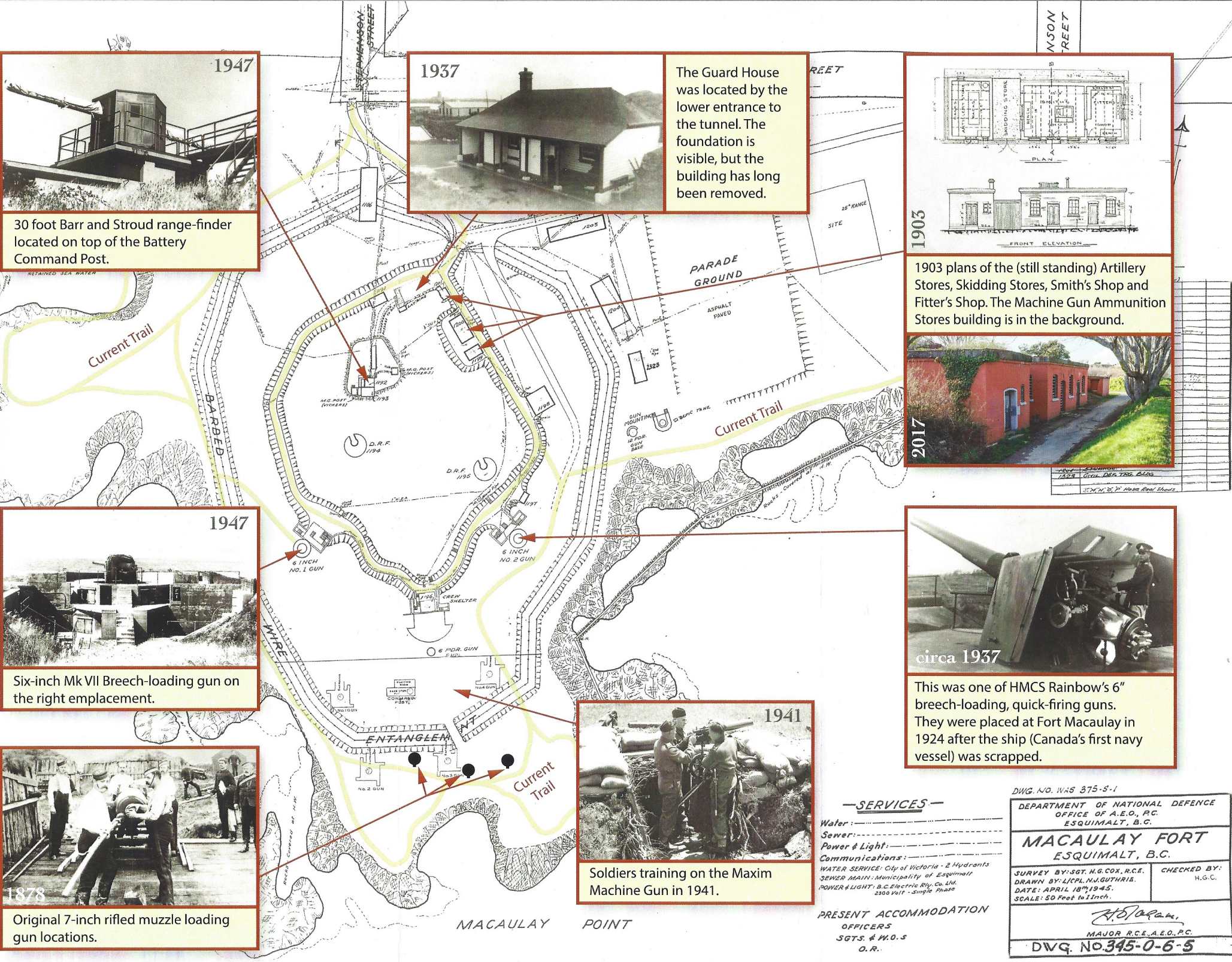
1941

Soldiers training on the Maxim Machine Gun in 1941.



circa 1937

This was one of HMCS Rainbow's 6" breech-loading, quick-firing guns. They were placed at Fort Macaulay in 1924 after the ship (Canada's first navy vessel) was scrapped.



SERVICES

Water: _____
 Sewer: _____
 Power & Light: _____
 Communications: _____
 WATER SERVICE: City of Victoria - 2 Hydrants
 SEWER MAIN: Municipality of Esquimalt
 POWER & LIGHT: B.C. Electric Ry. Co. Ltd.
 2500 Volt - Single Phase

PRESENT ACCOMMODATION
 OFFICERS
 SGTs. & W.O.s
 O.R.

DWG. NO. W45 375-S-1

DEPARTMENT OF NATIONAL DEFENCE
 OFFICE OF A.E.O., P.C.
 ESQUIMALT, B.C.

MACAULAY FORT
 ESQUIMALT, B.C.

SURVEY BY: SGT. H.G. COX, R.C.F. CHECKED BY: _____
 DRAWN BY: LTJPL. N.J. GUTHRIE. H.G.C.
 DATE: APRIL 18th, 1945.
 SCALE: 50 Feet to 1 Inch.

H. J. ...
 MAJOR R.C.E., A.E.O., P.C.

DWG. NO. 345-0-6-5