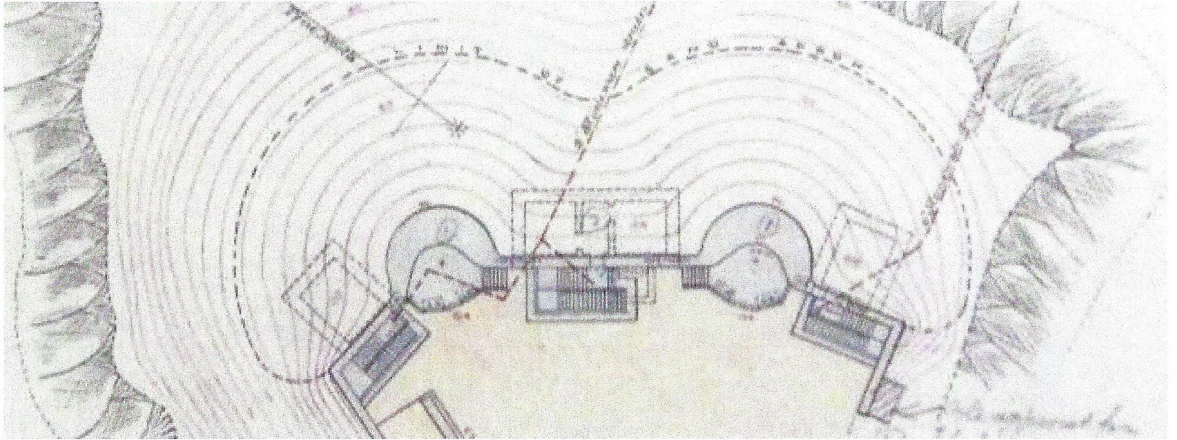


## Belmont Battery and Blackrock Battery

These two batteries were built either side of the harbour entrance. Belmont Battery was erected on a rocky outcrop near to the shore-line about 100 yards southwest of the Rodd Hill Two Gun Battery. Blackrock Battery was built on the eastern side of the entrance within the Naval Base near the shore-line over-looking Scrogg Rocks. Work commenced in October 1898. Each battery was of the standard design, with two concrete emplacements with an underground magazine between the two emplacements. Additionally an underground crew shelter and R.A. Store were also provided.

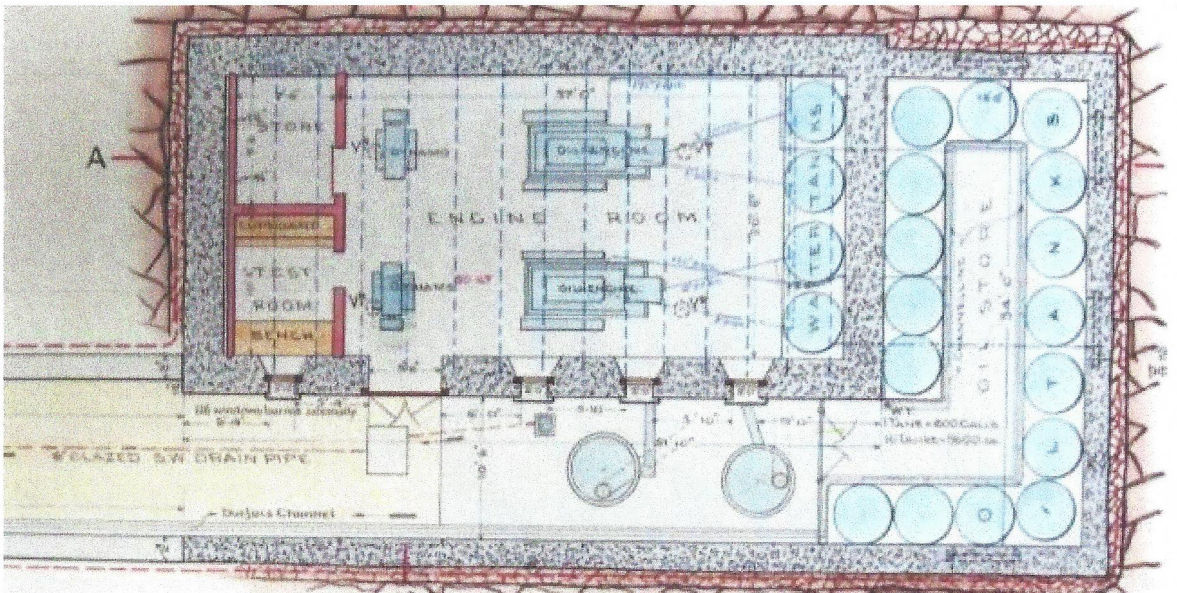
Both batteries were completed in 1900. Blackrock Battery came in at its estimated price of £2,400, the cost of Belmont Battery is not known, but it is likely to have been a similar cost.



Blackrock Battery

As well as the quick-firing gun batteries the harbour entrance was defended by electric search lights. Two installations were built either side of the harbour entrance at Rodd Hill and Duntze Head. Each installation consisted of two electric search lights, an engine/dynamo room and fuel store.

Searchlights 1 and 2 were on the Rodd Hill side. Position 1 was fitted with a traversing concentrated beam search-light with a maximum range of about 5,000 yards. Position 2 had a fixed 'sentry' beam covering the channel leading to the harbour entrance. Positions 3 (fixed) and 4 (traversing) were mounted on the Duntze Head side.



Rodd Hill DEL Engine Room and Fuel Store