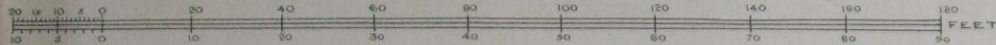


VICTORIA, B.C. ESQUIMALT DISTRICT, —
NAVAL YARD, BLACKROCK BATTERY, — RECORD PLANS OF —
EMPLACEMENT FOR TWO 12^{PR} Q.F. GUNS. —

SURFACE PLAN, SCALE 20 FEET TO ONE INCH (R.F. $\frac{1}{240}$)



DETAILS, SCALE 10 FEET TO ONE INCH (R.F. $\frac{1}{120}$).

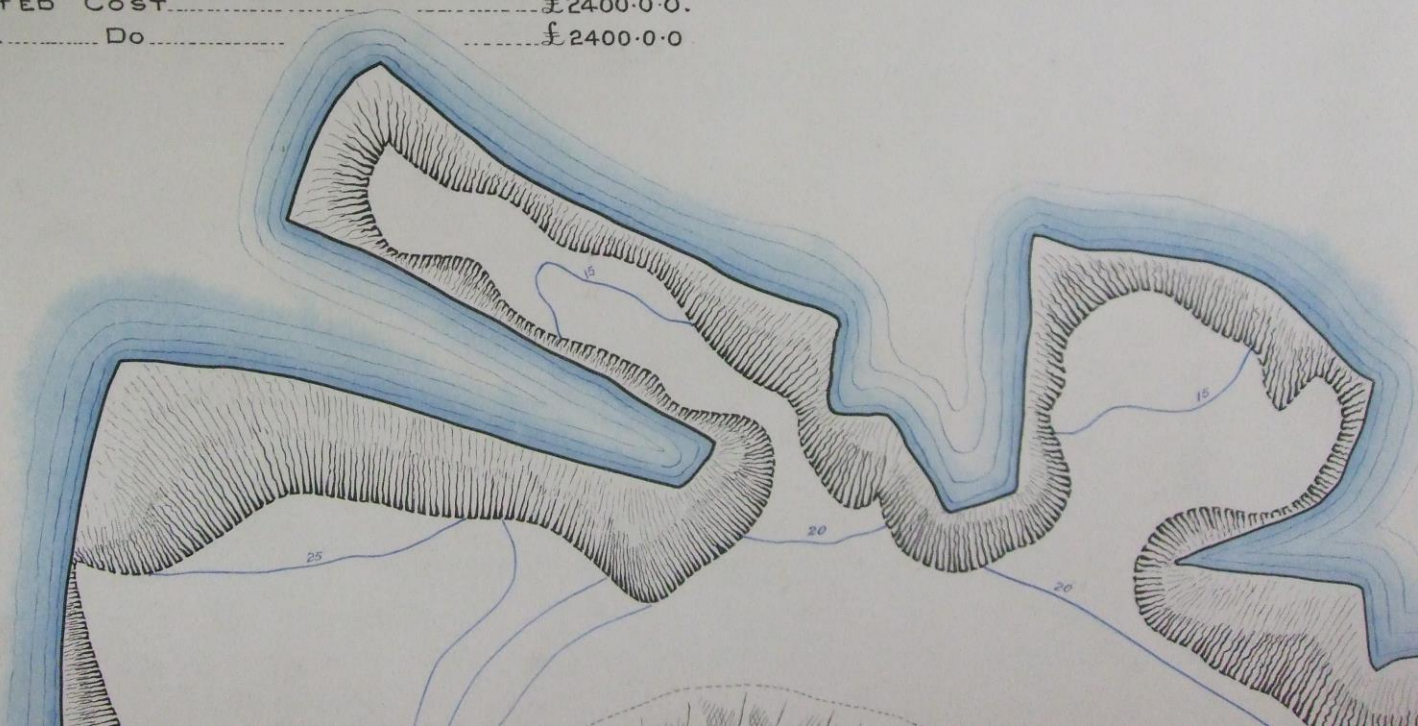
AUTHORITY FOR COMMENCEMENT OF WORK, W.O. CANADA 5/47 OF 19-9-98.

DATE OF COMMENCEMENT OF THE WORK, 15-10-98.

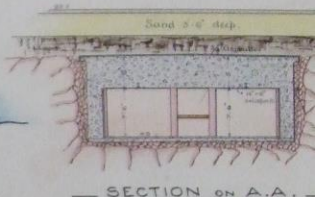
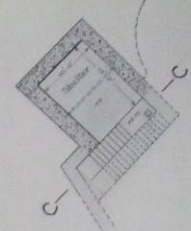
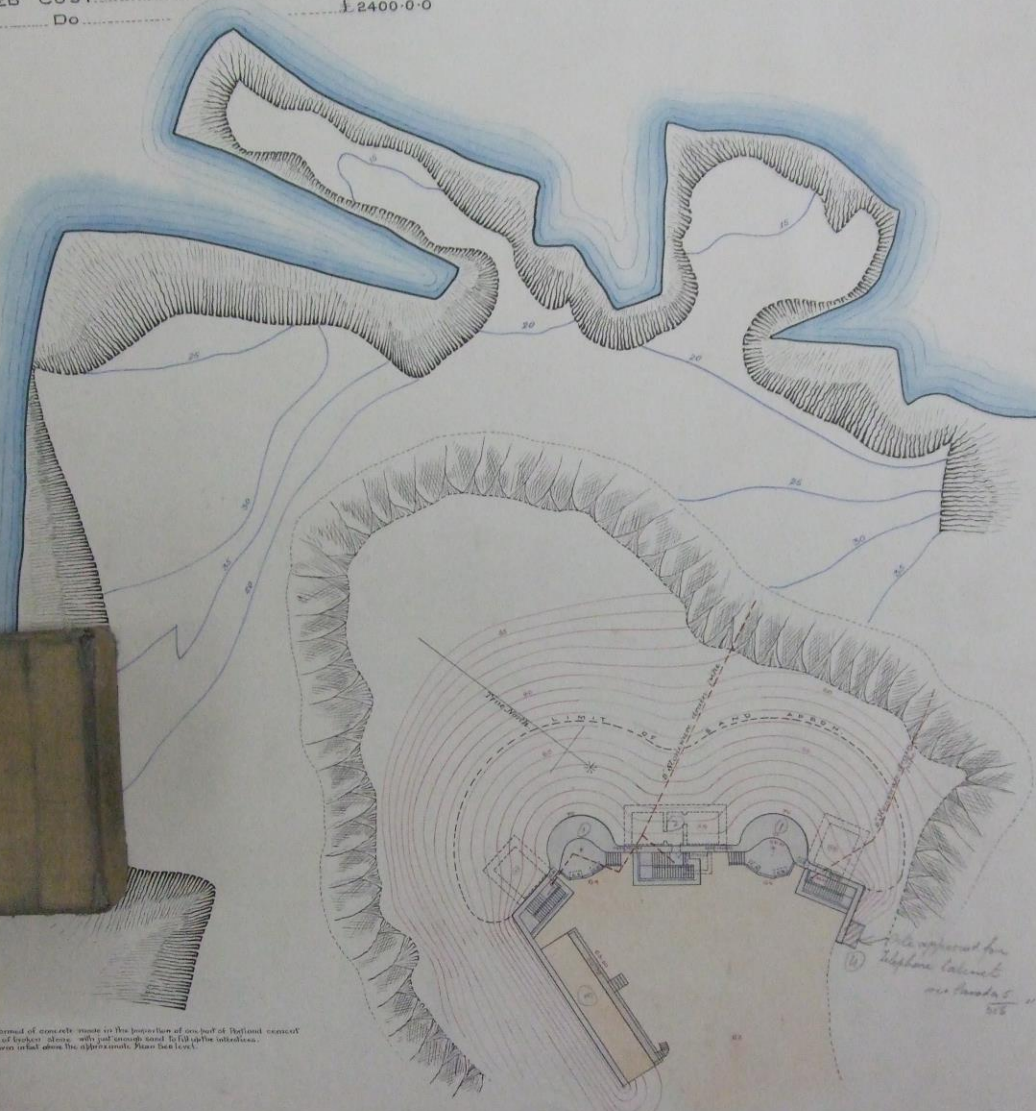
Do COMPLETION Do 5-5-00.

ESTIMATED COST £2400-0-0.

ACTUAL Do £2400-0-0.



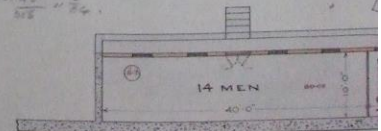
AUTHORITY FOR COMMENCEMENT OF WORK, 15-10-98.
 DATE OF COMMENCEMENT OF THE WORK, 5-5-00.
 Do COMPLETION Do
 ESTIMATED COST £2400-0-0.
 ACTUAL Do £2400-0-0



NOTE —
 Small recesses 4' wide x 2' high x 2' deep capacity of 4
 Carriage recesses 4' wide x 2' high x 2' deep

The draw is formed of concrete made to the proportion of one part of Portland cement
 to three parts of broken stone with just enough sand to fill up the interstices.
 The blocks are given to bed above the object's mouth. Please take note.

The site is prepared for
 telephone cables
 see sketches 11 & 12.



— DETAIL OF SHELTER ON LEFT FLANK

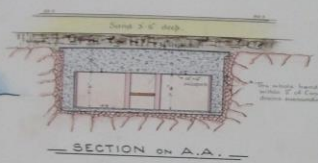
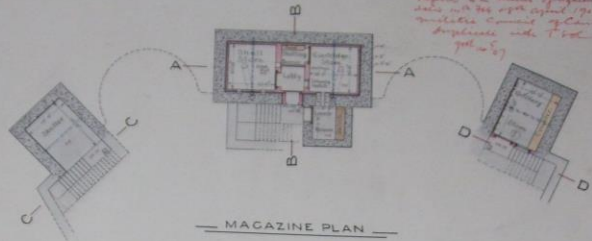
TRAY NO. _____

DRAWN BY _____

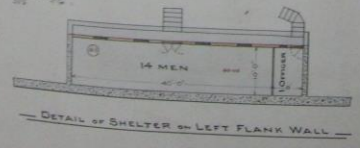
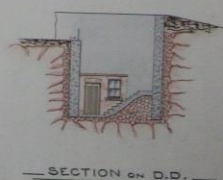
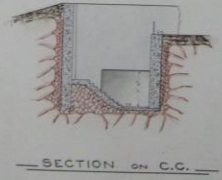
PLANS OF —

DRAWING N^o

Approved by the Bureau of Engineering, G.I. Dept. of the Army, 1917.
Mobile Command of Engineers
Approved and T. Col. - General
1917



NOTE
 Shell resistance 4' concrete - 2' light 2' x 12' deep capacity of each = 550 pounds.
 Ceiling resistance 4' concrete - 2' light 2' x 12' deep capacity of each = 400 pounds.



A. Esquell
 LT: COLONEL,
 O.C., R.E. ESCU
 12/1/17